

HBO 2002 W/MA

HBO-IC Microlithography lamps for Canon i-line systems | Microlithography lamps for Canon i-line systems

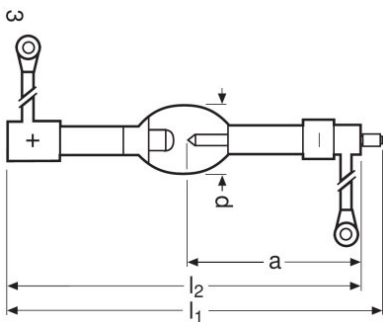


Technical data

Electrical data

Nominal current	54 A
Nominal voltage	370 V
Type of current	DC
Rated wattage	200000 W
Nominal wattage	2000.00 W

Dimensions & weight



Diameter	620 mm
Length	2700 mm
Electrode gap cold	3.0 mm

Capabilities

Burning position	Other ¹⁾
------------------	---------------------

¹⁾ Anode underneath

Environmental information

Information according Art. 33 of EU Regulation (EC) 1907/2006 (REACH)	
Date of Declaration	05-03-2024
Primary Article Identifier	4050300628240 4050300947259
Candidate List Substance 1	Lead
CAS No. of substance 1	7439-92-1
Safe Use Instruction	The identification of the Candidate List substance is sufficient to allow safe use of the article.
Declaration No. in SCIP database	af958d72-01f1-43c6-98a7-e4cb52024dea d3ee2a8f-7201-41c8-8fe6-b8140950a0a3

Product datasheet

Safety advice

Because of their high luminance, UV radiation and high internal pressure (when hot) HBO lamps may only be operated in enclosed lamp casings specially constructed for the purpose. Mercury is released if the lamp breaks. Special safety precautions must be taken. More information is available on request or can be found in the leaflet included with the lamp or in the operating instructions.

Logistical Data

Product code	Product description	Packaging unit (Pieces/Unit)	Dimensions (length x width x height)	Volume	Gross weight
4050300628240	HBO 2002 W/MA	Folding carton box 1	589 mm x 320 mm x 230 mm	43.35 dm ³	2656.00 g
4050300732572	HBO 2002 W/MA	Folding carton box 4	- x - x -		
4050300628257	HBO 2002 W/MA	Shipping carton box 4	800 mm x 600 mm x 825 mm	396.00 dm ³	18937.00 g

The mentioned product code describes the smallest quantity unit which can be ordered. One shipping unit can contain one or more single products. When placing an order, for the quantity please enter single or multiples of a shipping unit.

Disclaimer

— Subject to change without notice. Errors and omission excepted. Always make sure to use the most recent release.